

Dashboards and Analytics

Monitor your EHS Activities with high performance dashboard



A comprehensive software solution that helps you efficiently capture, analyze, and report the EHS and sustainability data that's important to your organization.

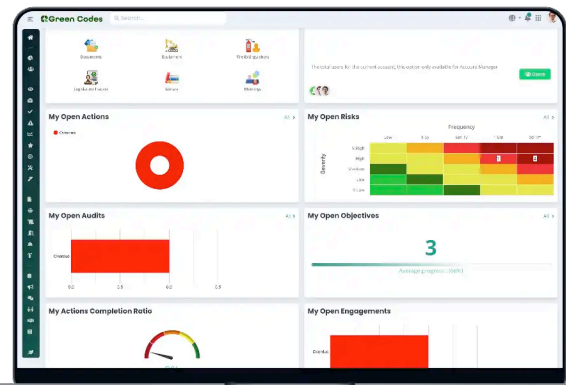
EHS Metrics for Sustainability

Sustainability is the new school of thought in business. Investors are actively seeking companies who can demonstrate their commitment to the environment, and who make operational efficiency a priority.

As a result, corporate executives are increasingly reliant on EHS and sustainability metrics as indicators of overall performance and risk. To provide executives and investors with the information they need to stay ahead in a fast-paced and highly competitive business environment, EHS managers must be able to quickly generate customized reports that show the most relevant indicators in real-time.

Green Codes EHS Performance Metrics gives you the ability to collect EHS and sustainability data at each of your locations, and convert it into meaningful EHS metrics that help you cut costs.

- **Lagging & Leading Indicators**
- **Observation Analysis**
- **Action Tracking and Monitoring**
- **First Aid Analysis and Charts**
- **PTW Monitoring Tool**
- **Risk Analysis**



Performance Metrics Made Easy

Successful organizations depend on the most current and accurate data to drive sustainable business strategies. If you're in charge of generating and reporting EHS metrics including incident rates, employees engagements, vendors performance, energy consumption, waste generation, emissions or any number of key EHS indicators, you know how hard it can be to manage all the data. Try to manage it across multiple facilities and locations, and the task can become overwhelming.

Green Codes Analysis simplifies EHS data collection and analysis, and helps you track the lagging and leading indicators that are important to your business. Our solution gives you the power and flexibility to measure and compare the EHS metrics by which your organization gauges its success. Why struggle with paper and spreadsheet-based systems, or outdated software that makes data collection and analysis harder than it should be. The BEN EHS solution is quick and easy to implement, and you'll appreciate the speed at which information flows from all corners of your enterprise into one centralized platform.

Dashboards and Analytics

Monitor your EHS Activities with high performance dashboard

Design and User Interface

Multilingual Interface

Simple and intuitive user interface makes incident/near miss/hazard entry, analysis, and reporting fast and easy for users of all levels

System can be scaled across your entire enterprise, from the individual department or facility level, to every location throughout your organization

Mobile App (Android iOS) makes core system features and functionality fully available through your tablet or smart phone

Easy-to-use administrative controls and settings mean there's no need to hire additional IT staff or system admins to maintain your system

Maintain your system without the need to hire additional IT staff or system admins using our easy-to-use administrative controls

Comprehensive Action Tracking Management

Input and track a virtually limitless number of user-configurable HSE metrics (observations, first aid and injuries, environment, health and safety statistics, etc.) from every location across your enterprise

Quickly and easily generate reports to view any of your metrics by location or over time, and export them to a variety of standard file types (XML, CSV, PDF, Excel, TIFF, DOCX)

Drive employee engagement and track preventive activities with user-configurable dashboards that provide your people with the most important and actionable data, including key risk factors and leading indicators

Assign target values to metrics of any kind, for any location or time period, to better evaluate performance and ensure compliance

Dashboards and Analytics

Monitor your EHS Activities with high performance dashboard

Dashboards Mobile App (Android / iOS)

Empower your employees to complete actions to reflect on dashboards at time anywhere using their mobile device

Instantly generate associated notifications right from your tablet or smart phone

Instantly receive notification with new actions raised to immediately assign responsible member from EHS Team

Customer Care & Training

Configure your system according to your unique EHS management requirements with personalized customer implementation and onboarding, and one-on-one consultation

Give your employees the skills to succeed with remote and on-site user training courses, including System Administrator/Super User Training and End User Training

Join a community of EHS experts whose experience and feedback drive the integration of industry best practices and innovate new features into EHS products at an accelerated pace

Resolve issues quickly and accurately with full application support services, including convenient access to our Customer Support Team, at no additional cost

Total Cost of Ownership

DOES NOT require third-party consultants to implement and maintain the system

DOES NOT charge based on a per-user fee, enabling all of your employees to access the system according to affordable pricing matrix at no additional cost for additional users

Solution includes Reports and Dashboards, responsive mobile design, our Solution Mobile App and Corrective Action management capabilities - at no extra cost

Easy system configurability eliminates the need for costly software customizations, and provides the flexibility you need to ensure long-term value for your business